
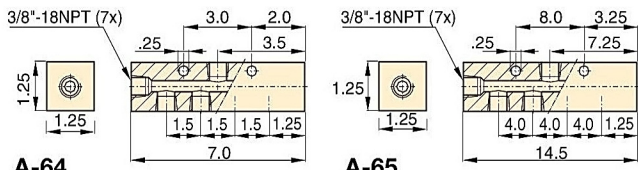

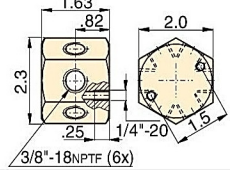

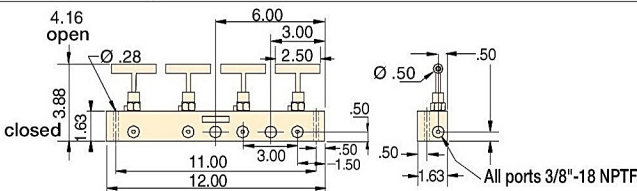
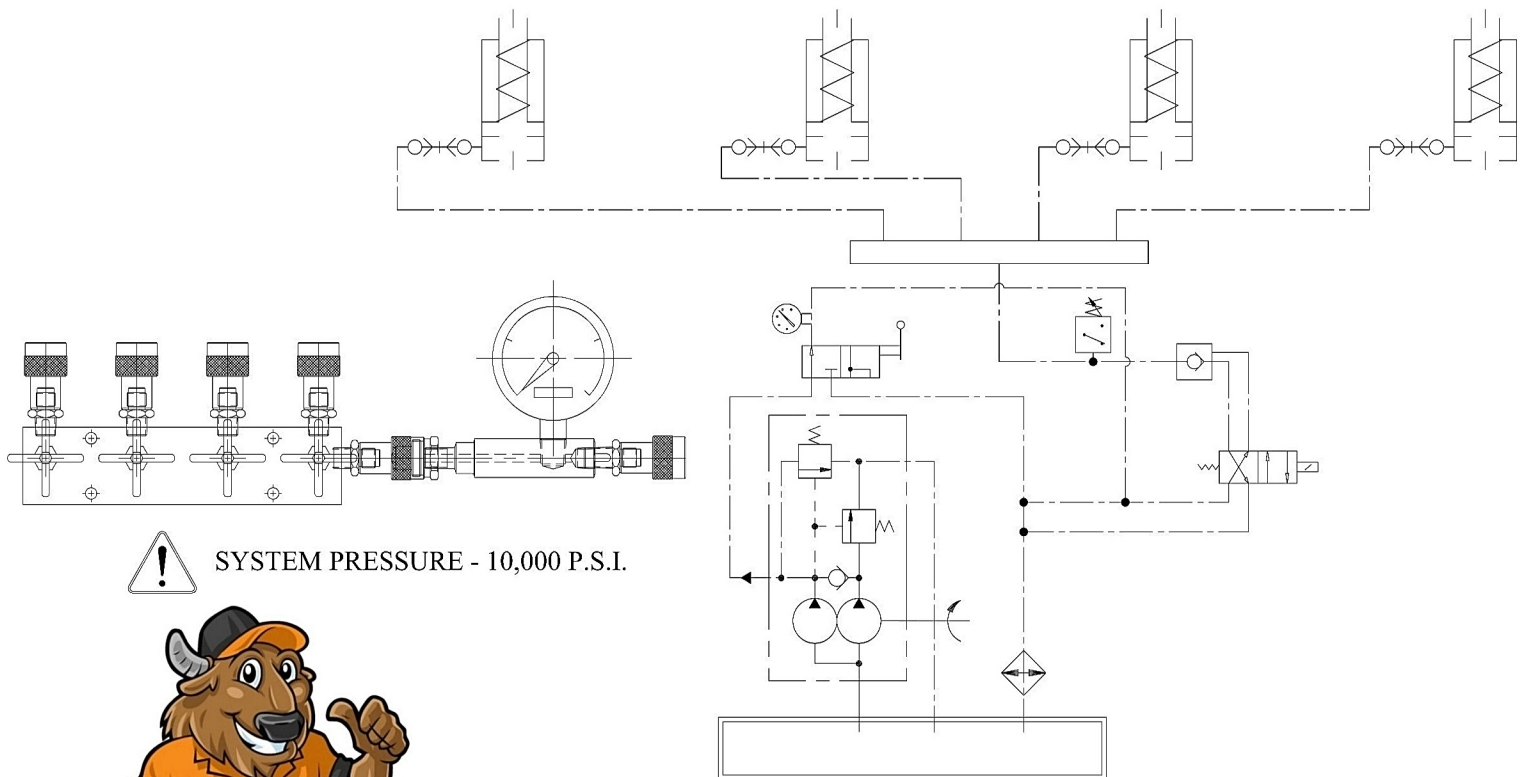


Hydraulic Manifolds

ENERPAC 
POWERFUL SOLUTIONS. GLOBAL FORCE.

Manifolds			
Description		Model No.	Dimensions (in)
7" Long Manifold with 7 female ports.		A-64	 <p>A-64 A-65</p>
14" Long Manifold that allows direct mounting of control valves to the manifold. 7 female ports.		A-65	
6-Port Hexagon Manifold Plugs furnished for all ports $\frac{3}{8}$ "-18 NPTF.		A-66	
Premounted Manifold Functions as split-flow valve to control 2 to 4 single-acting cylinders simultaneously. All ports $\frac{3}{8}$ "-18 NPTF.		AM-21 AM-41	 <p>All ports $\frac{3}{8}$"-18 NPTF</p>



**Please call (716) 893-6510
to discuss your
multi-port manifold requirements.**