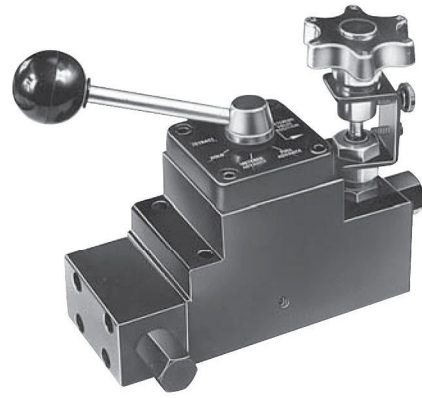
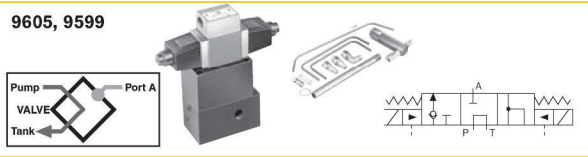




10,000 PSI., 3/8" PORTS, 5 GPM MAX FLOW RATE.

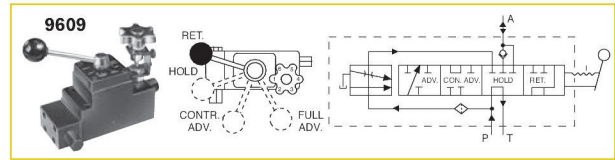


9605, 9599



3-WAY/3-POSITION (TANDEM CENTER) SOLENOID VALVES WITH POSI-CHECK®

Application – Single-acting cylinders.
Actuation – Solenoid operated: 9605 is 115 volt, 50/60 Hz; 9599 is 24 volt, 50/60 Hz.
Functions – “Advance,” “hold” and “return” positions. When in “advance,” solenoid “B” is energized and oil goes from pump to cylinder through pressure port. In “return” position, solenoid “A” is energized and oil is directed from cylinder and pump to reservoir. With both solenoids de-energized, in “hold” position, oil from pump is directed back to reservoir while oil is checked in cylinder. The **Posi-Check®** feature holds load when shifting from “advance” to “hold” position.
Used on these pumps – Furnished with pilot lines and adapters for PE55, PE30 (carrying handles must be removed) and PE120 series. For application on other models, consult factory.
No. 9605 – 3-way/3-position (tandem center) solenoid valve, 115 volt, 50/60 Hz. Wt., 14.0 lbs.
No. 9599 – Same as 9605 except for 24 volt, 50/60 Hz circuits. Wt. 14.0 lbs.
NOTE: Valves above are shipped without controls. Use 202777 remote hand control (see page 130). Consult factory for field installation.



3-WAY/4-POSITION MANUAL PRESSURE COMPENSATED VALVE

Application – Single-acting cylinders. Primarily for use in testing soil, rock, concrete, asphalt and related engineering materials.
Actuation – Lever and adjustable, pressure compensated flow control valve.
Functions – Cylinder piston “return,” “hold,” “controlled advance” (pressure compensated) and “advance” (full flow). Will deliver a relatively constant flow regardless of pressure between 1,000 and 10,000 psi.
Used on these pumps – PA17, PA46, PA55, PE17, PE21, PE30*, PE46, PE55, PE90, PE200, PE400, PG30*, PG55, PG120, PG400, PQ60 and PQ120 series. * **NOTE:** Adapter kit 252161 is required for mounting this valve to a PE30 or PG30 series pump.
NOTE: This valve can be remote mounted with a 9510 subplate (see page 131).
No. 9609 – 3-way/4-position manual pressure compensated valve. Wt., 8.7 lbs.
CAUTION: To prevent sudden, uncontrolled descent of a load as it is being lowered, use a No. 9596 Load Lowering Valve or No. 9720 Counter Balance Valve (see page 118) in conjunction with the directional valve used in your application.
IMPORTANT: Conversion kit 251528 must be used when mounting the 9609 valve on PA17 or PE17 pumps.
IMPORTANT: When ordering any valve for a PE30 or PG30 series pump, 1/2" longer mounting screws are required. For valves 9500, 9501 and 9511, order four 12001 cap screws. For valve 9552, 9506, and 9507, order four 11956 cap screws. For valves 9599 and 9605, order four 251078 cap screws. For valve 9609, order four 10855 cap screws.

